

Aspherical Lens 400 Series Cap Mounted Type

Applications:

Laser Diode Coupling
Single Element Coupling Systems
Laser Focusing
Laser Diode Pigtailling



Features:

Pb (Lead) Free	Precision Molded Optics	Easy Handling - Mounted Optics
Telcordia Compliant	Compact Design	Environmentally Friendly

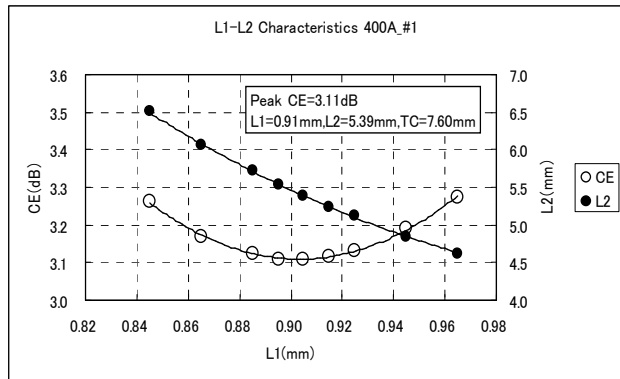
Description:

Go!Foton's Aspherical Lens Series 400 is ideal for coupling laser light into optical fiber. This lens is produced from all new NSG materials that are lead free to meet environmental concerns. Other benefits to this environmentally friendly lens are its easy handling through its mounted housing and its compact design.

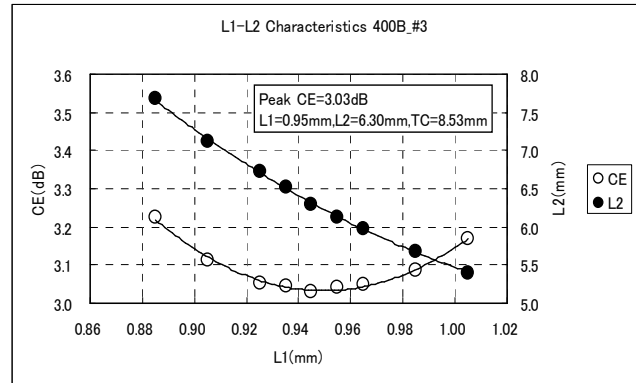
Specifications:

Parameter	Symbol	Product Number					
		400A		400B		400C	
Operating Wavelength (nm)	WL	1310	1550	1310	1550	1310	1550
Effective Focal Length (mm)	EFL	1.21	1.22	1.29	1.29	1.37	1.38
Magnification	M	2.47	2.51	3.15	3.21	3.92	4.00
Effective NA	NA	0.4 x 0.16		0.4 x 0.125		0.4 x 0.10	
Chip Height (mm)	CH	1.26		1.26		1.26	
Total Mechanical Length (mm)	TML	7.44	7.51	8.58	8.38	10.04	10.21
Total Conjugate (mm)	TC	6.18	6.25	7.32	7.42	8.78	8.95
Transmittance (%)	T	96	96	96	96	96	96
Wave Front Abberation (RMS, λ)	rms	0.04	0.04	0.04	0.04	0.04	0.04
Joint Strength (N)	F	> 98		> 98		> 98	
Hermeticity (mbar • 1/sec.)	He-LEAK	< 1 x 10 ⁻⁹		< 1 x 10 ⁻⁹		< 1 x 10 ⁻⁹	

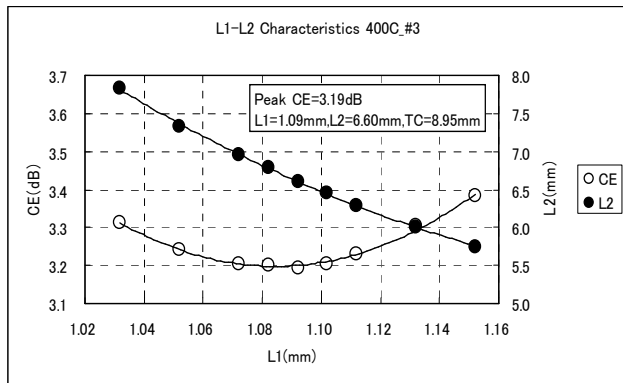
Typical Coupling Property:



400A

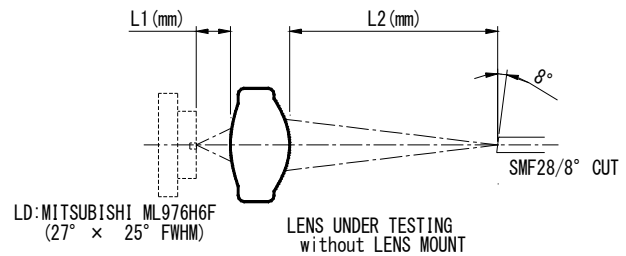


400B

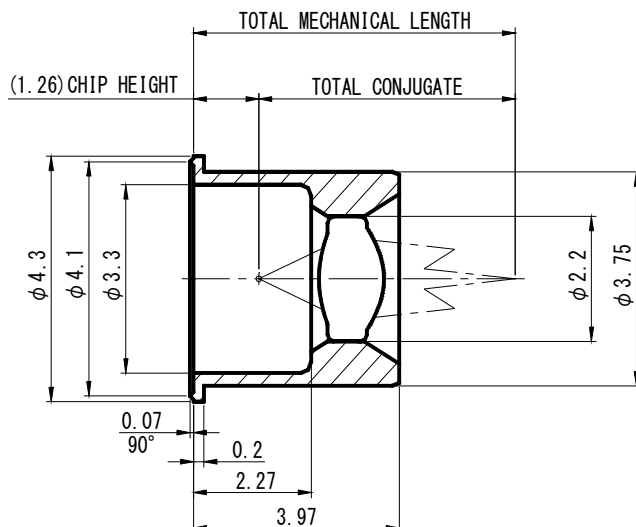


400C

Measurement System:



Mechanical Dimensions:



Document # - GF-S-MKT-A400-REV3-09-09