

PEACOC® CHT Clamshell Hardened Terminal

Description:

GoFoton's innovative CHT offers hardened fiber terminal functionality using standard fiber drop cables and connectors – no hardened connectors required! The clamshell terminal design provides IP68 protection for each individual fiber connection while providing fast, easy, and secure access to deploy fiber networks quickly and proficiently. CHT offers a compact design to fit into small spaces for any OSP or ISP environment and is available in 4-port and 8-port versions with a variety of mounting options and cable stub lengths for applications in FTTx, Wireless, and other fiber networks. It's reliable high-density, hardened connectivity – **that works!**

Benefits:

- Reduces the need for splicing in the OSP environment
- Eliminates dependence on hardened connectors
- Shortens lead-times with standard universal drop cables and connectors
- Diversifies supply chain using standard fiber cables
- Simplifies inventory management
- Deploys in a broad applications space across any OSP, 5G and FTTx network

Features:

- Hardened connectivity using standard LC, SC, and MPO fiber connectors
- Compatible with any standard universal drop cable
- Isolated individual connector ports, each in a dedicated IP68 chamber with reliable clasp latching
- Compact 4-Port and 8-Port configurations
- Pole, Wall, Pedestal, Manhole, Handhole and Strand mountable
- Variety of input fiber stub lengths with two spooling options depending on deployment scheme
- Compliant with GR-771 and IEC 60529 (IP68)

Applications:

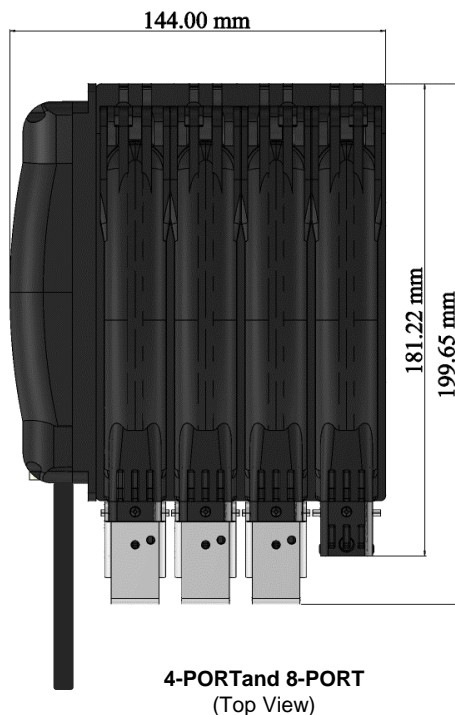
- Telecommunications & Data Communications networks
- Ideal for 5G, Small Cell, Rural, and DAS Networks
- FTTH, FTTA and MDUs
- External or Concealed within Pole Mounting



PEACOC® CHT Clamshell Hardened Terminal

PARAMETER	SPECIFICATION
Fiber Capacity (drops)	4-Port (1-row) 8-Port (2-row)
Adapter Type(s)	LC-APC LC-UPC SC-APC SC-UPC MPO
Pre-Stubbed Lengths	50 – 1000+ feet
Outer Dimensions	4-Port: 5.7" x 7.85" x 2.2" 8-Port: 5.7" x 7.85" x 3.07"
Operating Temperature	-40°C to +70°C
Mounting Options	Pole, Wall, Strand, Pedestal, Handhole, Manhole
Cover	Individual Latched Chambers
Color	Black
Packaging	Rotating Spool in a Carton (2-options) - Standard Spool: Pull stub end - Reverse Spool: Pull terminal end
Standards	GR-771 and IEC 60529 (IP68)

Product Dimensions:

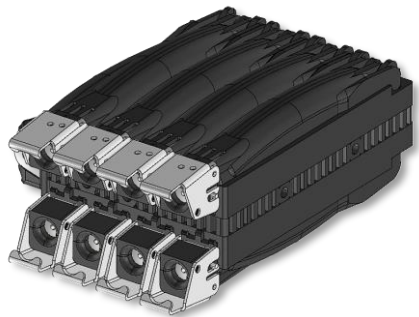


PEACOC® CHT Clamshell Hardened Terminal

Port Options:

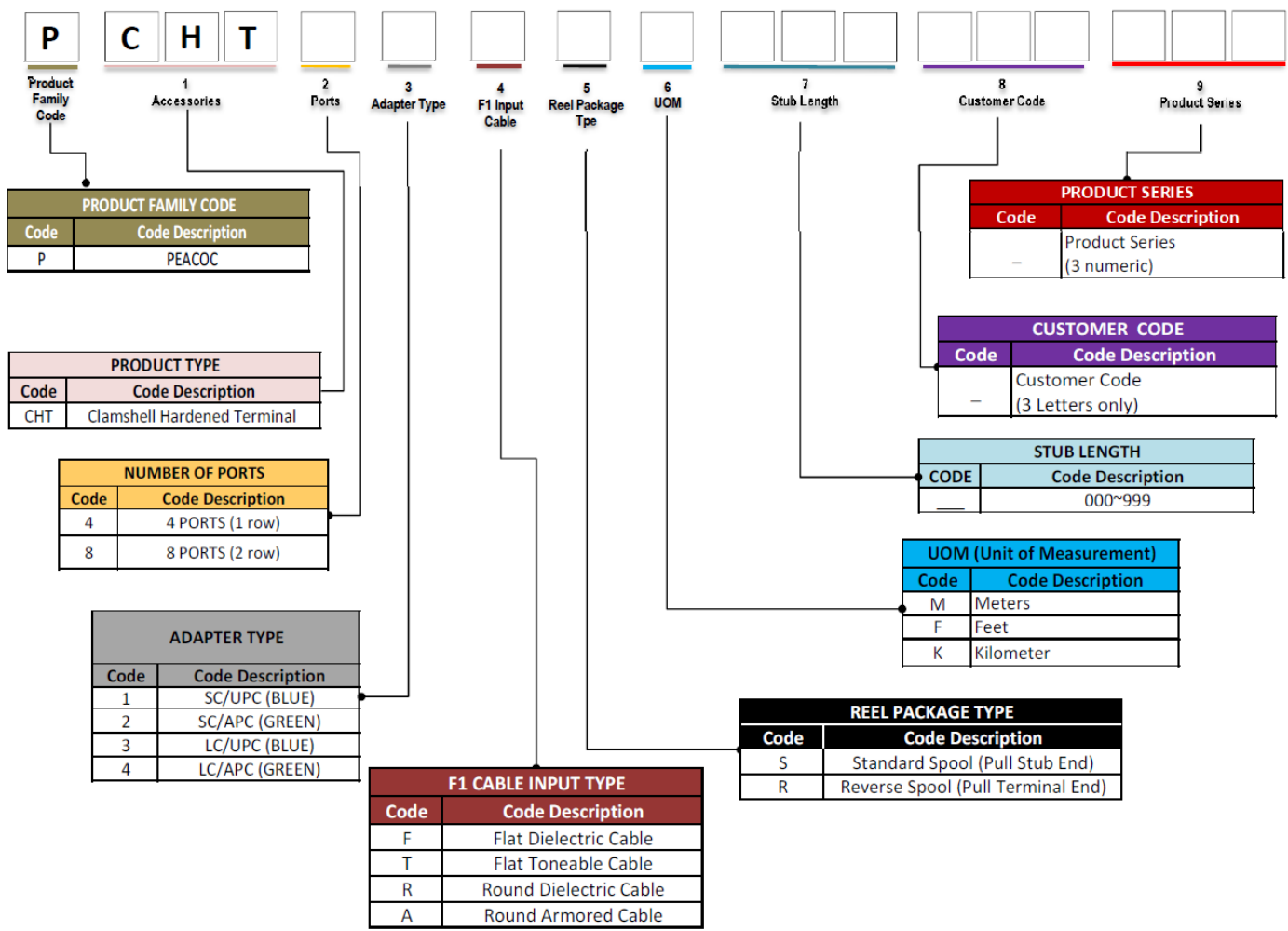


4 PORTS (1 ROW)



8 PORTS (2 ROWS)

Ordering Guide:

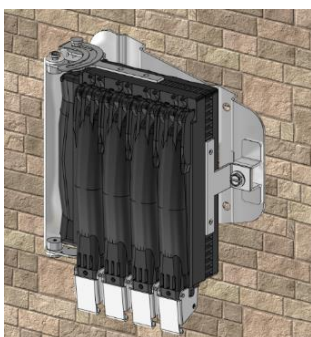


PEACOC® CHT Clamshell Hardened Terminal

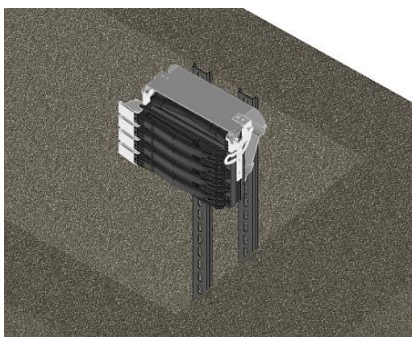
Mounting Options:



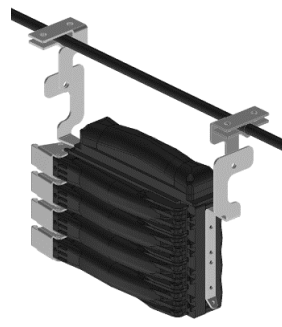
POLE MOUNT



WALL MOUNT



HANDHOLE MOUNT



STRAND MOUNT

Mounting Parts Ordering Guide:

MODEL CODE	DESCRIPTION
PCHTMP4	CHT MOUNT BRACKET 4-PORT FOR POLE WALL PED
PCHTMP8	CHT MOUNT BRACKET 8-PORT FOR POLE WALL PED
PCHTMS4	CHT MOUNT BRACKET 4-PORT STRAND
PCHTMS8	CHT MOUNT BRACKET 8-PORT STRAND

