



Streamlining your network with fiber optic patch panels

PEACOC® Enhanced View and Access (EVA)

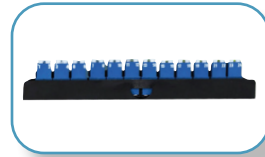
A Guide to Maximizing the Efficiency and Reliability of Your Data Center



bit.ly/peacoc-eva

Efficient and reliable connectivity solutions for your network

Fiber optic patch panels provide a centralized location for managing and connecting fiber optic cables and help streamline the network to ensure optimal performance and uptime. PEACOC Enhanced View and Access (EVA) offers a variety of features and benefits to support the smooth and secure operation of your data center infrastructure. Whether you're installing a single panel or a full-scale deployment, EVA offers a flexible and effective solution.



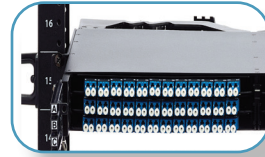
Easily Identifiable Ports:

Each EVA port is marked with a large print for easy identification. Additionally, the ports are marked on the bottom as well as the top for easy identification regardless of location in the rack.



Spreadable Adapters:

The spreadable adapter technology enables the quick isolation of optical connections from adjacent ports, providing ample unobstructed handling space for safe, fast and error-free installation and maintenance.



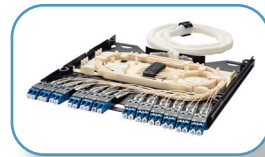
High-Density Patch Panel:

Our high-density patch panel can accommodate up to 144 LC fiber connections in a single rack unit, providing an excellent solution for space-constrained data centers and server rooms.



Universal Cassettes:

Serving as building blocks for the EVA platform, these unique cassettes feature interchangeable adapters and internal components allowing cassettes to be configured for Patching, Splicing, Taps, Splitters, or MPO conversions. Go!Foton's EVA platform features standards-based cabling and internal cassette polarity.



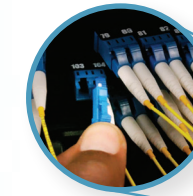
Fiber Optic Splice Tray:

Our fiber optic splice tray is an indispensable accessory for any fiber optic network installation. It provides a secure and organized environment for splicing and managing fiber optic cables.

Data centers require a robust and reliable networking infrastructure to support the needs of multiple clients. Fiber optic patch panels help manage and organize the complex web of fiber optic cables that connect these clients to the internet by providing a centralized location for managing cables and subscriber connections.

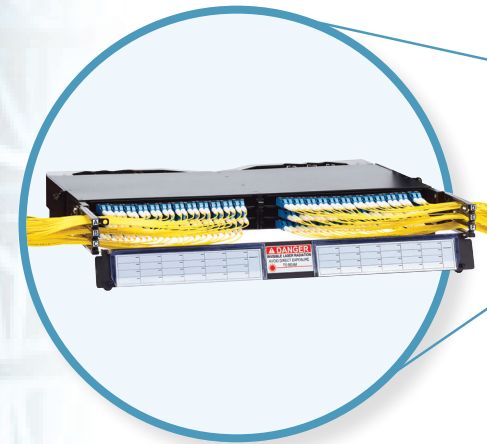
PEACOC® EVA High Density Fiber Management Platform

Network scalability at-the-ready. Introducing the PEACOC EVA platform. Finally, you don't have to invest in a completely new system every time you need to scale up. High reliability adapters offer improved performance and fewer data loss incidents. The unique design with adapter isolation further ensures a solution that can meet the current and future needs of your data center. PEACOC EVA solution not only saves on deployment cost and time, but also provide the assurance that your network investment will last for years.



Technician-friendly access

Innovative spreadable adapters allow uninterrupted access to connectors.



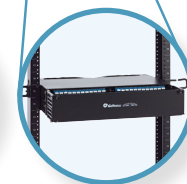
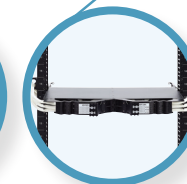
Industry-leading density

Up to 5,760 LC Ports or 2,880 SC Ports in 40 RU space and supports a variety of cable and connector types, minimizing the real estate needed in data center environments.



Rear Cable Mounting Brackets

The rear mounting brackets support single side cable installation.



Scalable Density

Available in standard 1, 2, and 4RU sizes. Custom configurations also available.



PEACOC® EVA High Density Fiber Patch Panel

Ordering Guide with Preterminated Cable Assemblies

P 2 3 4 5 6 7 T Pre-Terminated Cable Assemblies 9 10 11 12

(2) Number of RU

1	1 RU
2	2 RU
4	4 RU
X	Cassette Only

(3) Number of Cassettes

P	Empty Chassis
A	1
B	2
C	3
D	4
E	5
F	Fully Loaded 1RU
G	Fully Loaded 2RU
H	Fully Loaded 4RU

(4) Cassette Type

A	All Front Access
P	Patch
S	Splice

(5) Fiber Type

1	Single Mode (SMF)
2	Multi-mode (OM4)

(6) Cassette Adapter Type

A	CS
B	SN
C	MMC
D	MDC
G	SN-MT
K	LC Simplex
L	LC Duplex
M	MPO 8/12/24
N	MPO 16
S	SC Simplex

(7) Adapter Type/Color

A	UPC (Aqua - Multimode)
B	UPC (Blue - Single Mode)
G	APC (Green - Single Mode)
K	MPO (Black)

(9) Standard Cable Length

1	15' (6 m)
2	75' (23 m)
3	100' (31 m)
4	150' (46 m)
5	200' (61 m)
6	300' (92 m)
7	400' (122 m)
8	500' (153 m)
9	1000' (305 m)
C	Custom

(10) Fiber Count

A	72
B	144
C	144 (2x72)
D	268
E	288 (2x144)
F	575 (2x288)

(11) Far End Adapter Type

X	None (Stub)
A	CS
B	SN
C	MMC
D	MDC
G	SN-MT
L	LC
M	MPO
S	SC

(12) Cable Type

A	Riser
P	Plenum
S	I/O
U	Outdoor
Z	LSZH

By implementing our meticulously engineered PEACOC EVA fiber optic panel system, you establish the cornerstone of the data center. Through the integration of EVA patch panels, you unlock the capacity to optimize your network operations. For a deeper understanding of the advantages offered by all of Go!Foton's fiber optic patch panel solutions, kindly reach out to us using the contact details provided below.



Go!Foton Headquarters
28 Worlds Fair Drive
Somerset, NJ 08873, USA

www.gofoton.com