

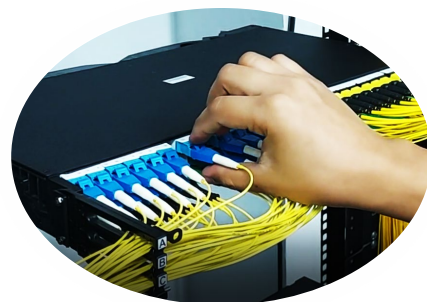
PEACOC® EVA High Density Fiber Patch Panel

Description:

PEACOC is a groundbreaking platform by Go!Foton that simplifies the management of optical connectivity for data center and telecom operators. With PEACOC "EVA," front patching adapters are easily accessible, while the spreadable adapter technology enables the quick isolation of optical connections from adjacent ports, providing ample unobstructed handling space for safe, fast, and error-free management of fiber jumpers. PEACOC is the only high-density solution that allows simultaneous access to front and back-side connectors from the same rack side. It's a highly efficient optical fiber management solution - *that works!*

Benefits:

- Spreadable adapters enable easy connector access without affecting insertion loss
- Instant port identification with easy access makes moves, adds, & changes in high fiber density environments manageable
- Port count can scale within the cassette for custom density
- Adaptive cassette design allows for a variety of optical components to be used to get the maximum platform utility
- Supports pre-terminated panel/cable assemblies
- Backside adapter maintenance can be done from front of chassis



Features:

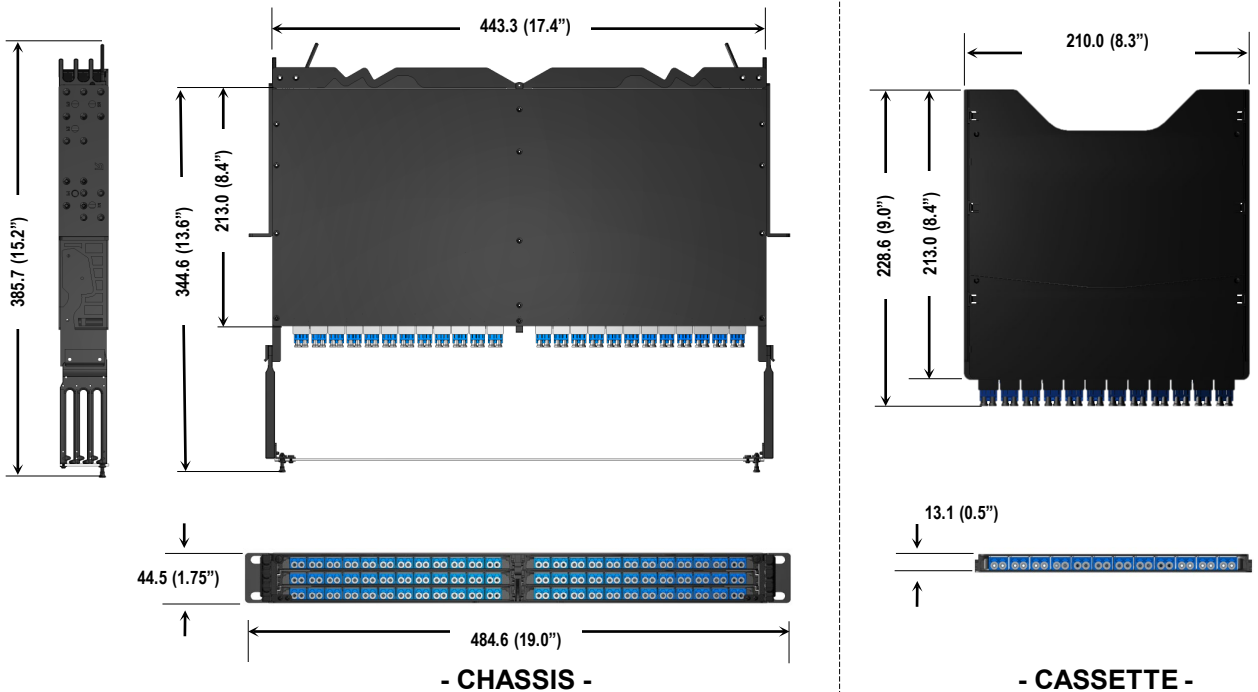
- PEACOC spreadable adapter technology
- 1RU density up to 72 Duplex LC ports (144f)
- Cassette based design supports patching, splicing, and integrated optical components such as Tap splitters, PLC splitters and xWDM filter modules
- Numbered LC, SC, MPO and other adapter types
- Scalable 2RU and 4RU chassis with protective doors
- Mounts in any 19" or 23" rack, frame, or cabinet



PEACOC® EVA High Density Fiber Patch Panel

PARAMETER	SPECIFICATION
Maximum Number of Ports per 1RU	Duplex LC: 72 Ports (144 fibers) Simplex SC: 72 Ports (72 fibers) MPO: 72 Ports (72 x 8, 12, 24 fibers)
Height	1RU (2RU and 4RU versions also available)
Width	19" Rack (default) 23" Rack (with available adapter brackets)
Depth	8.5" default
Mounting Position	Standard, Recessed, and Flush Mounting
Cable Type	Simplex & Duplex Jumpers, MPO Cables, or Multifiber Fan-outs Any: 1.2mm, 1.6mm, 2.0mm, 3.0mm, 3.8mm, etc.
Fiber Type	Single mode and Multimode
Connector Type	LC/UPC, LC/APC, SC/UPC, SC/APC, MPO, MDC
Operating Temperature	-40°C to +65°C
Standards	GR-449

Product Dimensions:



PEACOC® EVA High Density Fiber Patch Panel

Applications:

- Data center, Telecom Central Office, CATV Headend
- Fiber Management and Distribution Frames
- Wireless C-RAN Sites & MSCs
- Enterprise Network
- Outdoor Cabinets & Enclosures

Cassette Configurations:



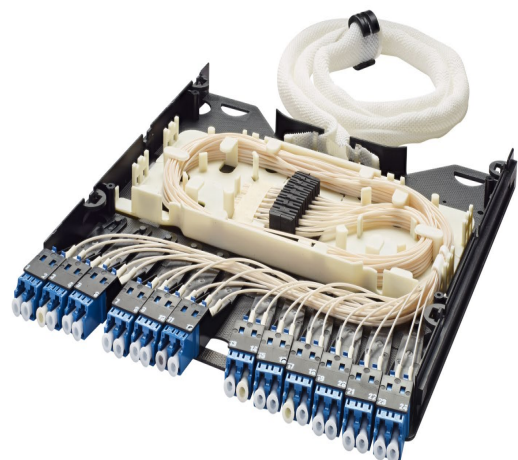
LC / SC / MPO / MDC Patch Panel Cassette



MPO-LC (or SC) Breakout Cassette



TAP / xWDM / SPLITTER Cassette



Direct Splice & Patch Cassette

PEACOC® EVA High Density Fiber Patch Panel

Ordering Guide:

P 2 3 4 5 6 7 8

(2) Number of RU

1	1 RU
2	2 RU
4	4 RU
X	Cassette Only

(3) Number of Cassettes

P	Empty Chassis
A	1
B	2
C	3
D	4
E	5
F	Fully Loaded 1RU
G	Fully Loaded 2RU
H	Fully Loaded 4RU

(4) Cassette Type

A	All Front Access
P	Patch
S	Splice

(5) Fiber Type

1	Single Mode (SMF)
2	Multi-mode (OM4)

(6) Cassette Adapter Type

A	CS
B	SN
C	MMC
D	MDC
E	Future Use
G	SN-MT
K	LC Simplex
L	LC Duplex
M	MPO 8/12/24
N	MPO 16
S	SC Simplex

(7) Adapter Type/Color

A	UPC (Aqua – Multimode)
B	UPC (Blue – Single Mode)
G	APC (Green – Single Mode)
K	MPO (Black)

(8) Inner Cable Options

A	1x12F Male MPO to SC Fanout
B	1x12F Male MPO to LC Fanout
C	1x16F Male MPO to SC Fanout
D	1x16F Male MPO to LC Fanout
E	1x20F Male MPO to LC Fanout
F	1x24F Male MPO to LC Fanout
G	2x8F Male MPO to SC Fanout
H	2x8F Male MPO to LC Fanout
K	2x12F Male MPO to LC Fanout
M	3x8F Male MPO to LC Fanout
N	Mass Fusion Splice
P	Single Splice
X	None



PEACOC® EVA High Density Fiber Patch Panel

Ordering Guide for Pre-terminated Cable Assemblies:



(2) Number of RU

1	1 RU
2	2 RU
4	4 RU
X	Cassette Only

(3) Number of Cassettes

P	Empty Chassis
A	1
B	2
C	3
D	4
E	5
F	Fully Loaded 1RU
G	Fully Loaded 2RU
H	Fully Loaded 4RU

(4) Cassette Type

A	All Front Access
P	Patch
S	Splice

(5) Fiber Type

1	Single Mode (SMF)
2	Multi-mode (OM4)

(6) Cassette Adapter Type

A	CS
B	SN
C	MMC
D	MDC
G	SN-MT
K	LC Simplex
L	LC Duplex
M	MPO 8/12/24
N	MPO 16
S	SC Simplex

(7) Adapter Type/Color

A	UPC (Aqua – Multimode)
B	UPC (Blue – Single Mode)
G	APC (Green – Single Mode)
K	MPO (Black)

(9) Standard Cable Length

1	15' (6 m)
2	75' (23 m)
3	100' (31 m)
4	150' (46 m)
5	200' (61 m)
6	300' (92 m)
7	400' (122 m)
8	500' (153 m)
9	1000' (305 m)
C	Custom

(10) Fiber Count

A	72
B	144
C	144 (2x72)
D	288
E	288 (2x144)
F	576 (2X288)

(11) Far End Adapter Type

X	None (Stub)
A	CS
B	SN
C	MMC
D	MDC
G	SN-MT
L	LC
M	MPO
S	SC

(12) Cable Type

A	Riser
P	Plenum
S	I/O
U	Outdoor
Z	LSZH

