

## PEACOC® Multiport Mid-Span Terminal (MMT)

### Description:

The PEACOC Multiport Mid-Span Terminal is a flexible fiber optic connectivity solution that can be deployed in either above or below grade applications to suit a variety of outside plant network needs. It offers a wide range of configurations for a variety of functions with guaranteed quality and water-tight performance: from mid-span splicing, to optical component integration, as well as pre-connectorized customer drop applications. The PEACOC MMT family of OSP terminals is ideal for any telecommunications, FTTx, or wireless fiber networks. It's flexible, reliable, high-density fiber management – **that works!**

### Benefits:

- Faster and more accurate installations with easy connector access using PEACOC spreadable adapter technology
- Provides flexibility with one form factor for a variety of applications (splice, splitters, TAPs and WDMs)
- Reduces lead times while diversifying the supply chain by using standard connector fiber drop cables
- Simplifies inventory management

### Features:

- Large capacity in a compact size
- Isolated user access between feeder/branch splice and drop cable/splice areas
- Splitter/TAP/WDM module tray is field replaceable
- Eight cable entry/exit ports for feeder and branch cables
- Up to 16 drop ports for flat or round cables
- Butt-splice and In-Line splice capable
- Both single fiber and ribbon splice options
- Holds up to 8' of cable/buffer tube slack for a 288F cable
- Pole, strand, wall, pedestal, handhole/manhole mountable
- Compliant with GR-771 and IEC 60529 (IP68)



### Applications:

- FTTx networks where mid-span splicing is required for new customer adds
- FTTx networks with distributed split architectures
- Rural FTTx deployments where subscriber density is significantly lower than in urban areas
- FTTx pathways that have individual or small clusters of subscribers spread out over long distances

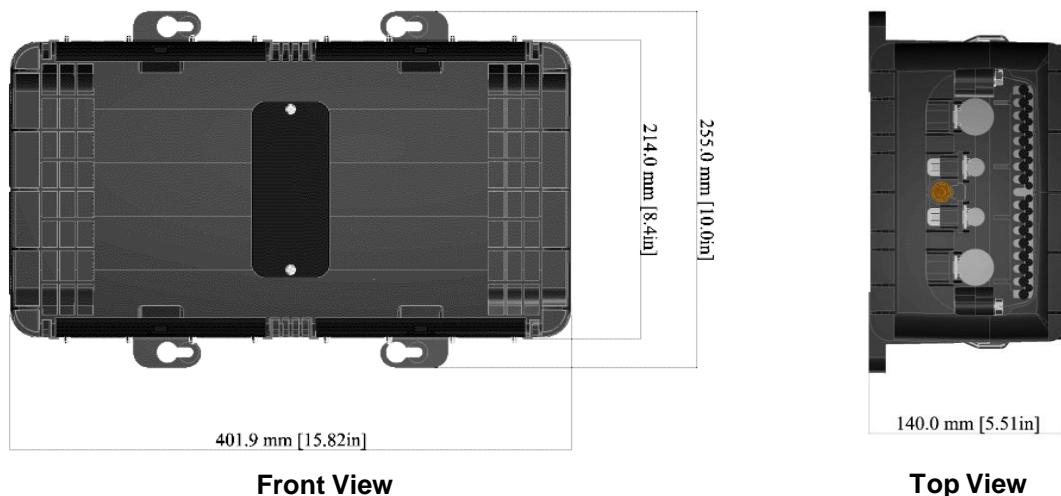


# PEACOC® Multiport Mid-Span Terminal

## Specifications:

PARAMETER	SPECIFICATION				
Cable Entry/Exit Ports	Feeder (x2): 13~25mm diameter Branch (x2): 3~12mm diameter				
Drop Ports Capacity	16 ports				
Adapter Type(s)	SC/APC & SC/UPC LC/APC & LC/UPC (duplex)				
Supported Drop Cables	<b>Round:</b> 3.0mm and 4.8mm <b>Standard Flat:</b> 8.1 x 4.6mm <b>Micro Flat:</b> 5.4mm x 3.0mm				
Splice Capacity	<table border="1"> <thead> <tr> <th>Small Tray</th> <th>Large Tray (butt splice only)</th> </tr> </thead> <tbody> <tr> <td>Up to 96 single fiber (loose-tube) splices Up to 12 mass fusion (ribbon) splices</td> <td>Up to 144 single fiber (loose-tube) splices Up to 18 mass fusion (ribbon) splices</td> </tr> </tbody> </table>	Small Tray	Large Tray (butt splice only)	Up to 96 single fiber (loose-tube) splices Up to 12 mass fusion (ribbon) splices	Up to 144 single fiber (loose-tube) splices Up to 18 mass fusion (ribbon) splices
Small Tray	Large Tray (butt splice only)				
Up to 96 single fiber (loose-tube) splices Up to 12 mass fusion (ribbon) splices	Up to 144 single fiber (loose-tube) splices Up to 18 mass fusion (ribbon) splices				
Outer Dimensions	15.8" x 8.4" x 5.5"				
Operating Temperature	-40°C to +65°C				
Mounting Options	Pole, Wall, Strand, Pedestal, Handhole				
Color	Black				
Functional Options	Loose-tube and Ribbon Splice PLC Splitters Engineered TAPs				
Standards	GR-771 and IEC 60529 (IP68)				

## Product Dimensions:



# PEACOC® Multiport Mid-Span Terminal

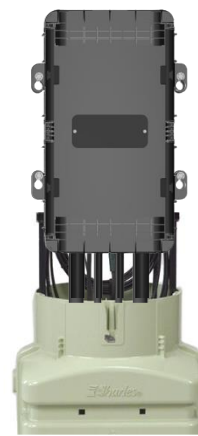
## MMT Mounting Options:



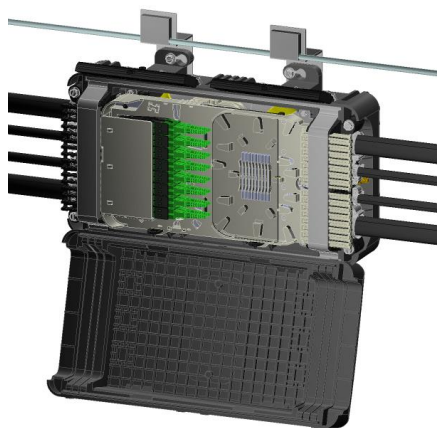
**Pole Mounting**



**Wall Mounting**



**Pedestal Mounting**



**Strand Mounting**



**Hand hole Mounting**

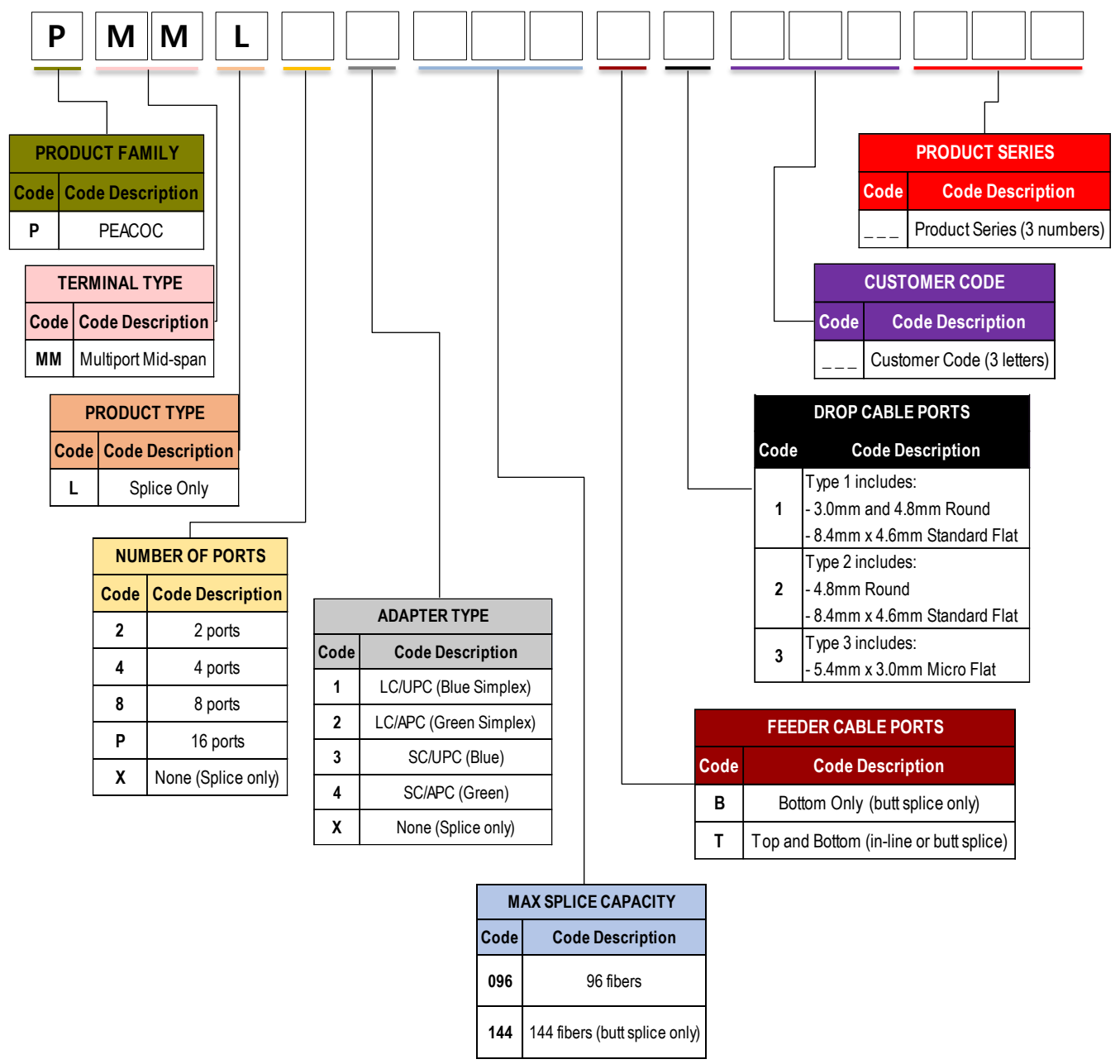
## Accessory Parts Ordering Guide:

MODEL CODE	DESCRIPTION
PMMTMP	MMT MOUNT BRACKET FOR POLE WALL OR PEDESTAL
PMMTMC	MMT MOUNT BRACKET FOR CABLE STRAND
PMMTGNDKIT	MMT GROUNDING KIT



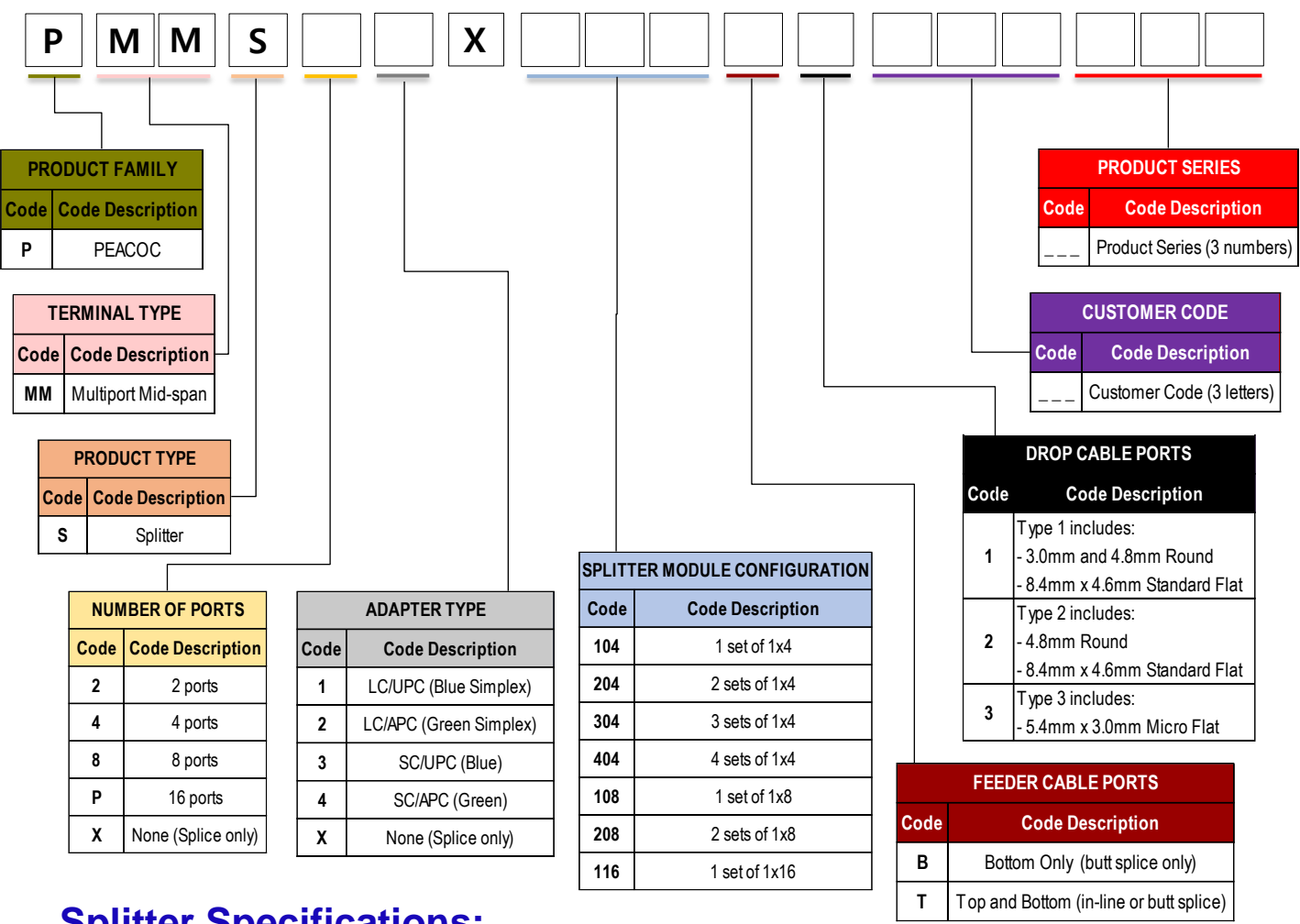
# PEACOC® Multiport Mid-Span Terminal

## Ordering Guide: MMT Splice-Only Application



# PEACOC® Multiport Mid-Span Terminal

## Ordering Guide: MMT with PLC Splitters



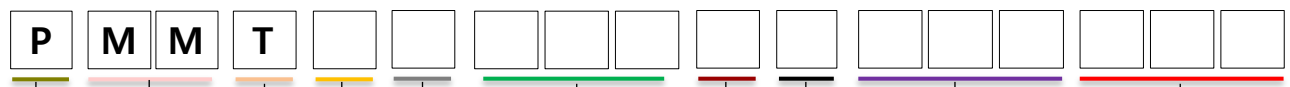
## Splitter Specifications:

PARAMETER	SPECIFICATION		
Operating Wavelength	1260~1620nm		
Configuration	1x4	1x8	1X16
Insertion Loss	≤ 7.2 dB	≤ 10.9 dB	≤ 14.3 dB
Uniformity	≤1.0 dB	≤1.0 dB	≤1.4 dB
Polarization Dependent Loss	≤0.2 dB	≤0.3 dB	≤0.3 dB
Return Loss	≥50 dB		
Optical Power Handling	≤ 300 mW		
Standards	GR-1209/GR-1221		

\* IL and RL includes connectors

# PEACOC® Multiport Mid-Span Terminal

## Ordering Guide: MMT with Engineered TAPs



PRODUCT FAMILY	
Code	Code Description
P	PEACOC

PRODUCT SERIES	
Code	Code Description
---	Product Series (3 numbers)

TERMINAL TYPE	
Code	Code Description
MM	Multiport Mid-span

CUSTOMER CODE	
Code	Code Description
---	Customer Code (3 letters)

PRODUCT TYPE	
Code	Code Description
T	Engineered TAPs

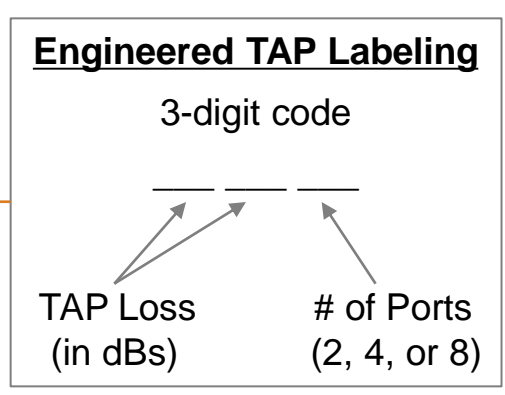
DROP CABLE PORTS	
Code	Code Description
1	Type 1 includes: - 3.0mm and 4.8mm Round - 8.4mm x 4.6mm Standard Flat
2	Type 2 includes: - 4.8mm Round - 8.4mm x 4.6mm Standard Flat
3	Type 3 includes: - 5.4mm x 3.0mm Micro Flat

NUMBER OF PORTS	
Code	Code Description
2	2 ports
4	4 ports
8	8 ports
P	16 ports
X	None (Splice only)

ADAPTER TYPE	
Code	Code Description
1	LC/UPC (Blue Simplex)
2	LC/APC (Green Simplex)
3	SC/UPC (Blue)
4	SC/APC (Green)
X	None (Splice only)

TAP SPLITTER TYPE	
Code	Code Description
--	2 digit numeric code

FEEDER CABLE PORTS	
Code	Code Description
B	Bottom Only (butt splice only)
T	Top and Bottom (in-line or butt splice)



# PEACOC® Multiport Mid-Span Terminal

## TAP Ordering Guide:

Code	TAP Value	TAP Module Description
<b>CODE FOR MODULES WITH 2-DROP PORTS</b>		
01	21 dB	99/1 TAP WITH 1X2 SPLITTER DROP PORTS
02	19 dB	98/2 TAP WITH 1X2 SPLITTER DROP PORTS
03	17 dB	97/3 TAP WITH 1X2 SPLITTER DROP PORTS
04	15 dB	95/5 TAP WITH 1X2 SPLITTER DROP PORTS
05	14 dB	94/6 TAP WITH 1X2 SPLITTER DROP PORTS
06	12 dB	90/10 TAP WITH 1X2 SPLITTER DROP PORTS
07	10 dB	80/20 TAP WITH 1X2 SPLITTER DROP PORTS
08	8 dB	75/25 TAP WITH 1X2 SPLITTER DROP PORTS
09	7 dB	70/30 TAP WITH 1X2 SPLITTER DROP PORTS
10	5 dB	60/40 TAP WITH 1X2 SPLITTER DROP PORTS
11	4 dB	1X2 SPLITTER DROP PORTS - TERMINATOR TAP
<b>CODE FOR MODULES WITH 4-DROP PORTS</b>		
12	21 dB	99/1 TAP WITH 1X4 SPLITTER DROP PORTS
13	19 dB	98/2 TAP WITH 1X4 SPLITTER DROP PORTS
14	17 dB	97/3 TAP WITH 1X4 SPLITTER DROP PORTS
15	15 dB	95/5 TAP WITH 1X4 SPLITTER DROP PORTS
16	13 dB	93/7 TAP WITH 1X4 SPLITTER DROP PORTS
17	11 dB	90/10 TAP WITH 1X4 SPLITTER DROP PORTS
18	10 dB	85/15 TAP WITH 1X4 SPLITTER DROP PORTS
19	9 dB	80/20 TAP WITH 1X4 SPLITTER DROP PORTS
20	7 dB	1X4 SPLITTER DROP PORTS - TERMINATOR TAP
<b>CODE FOR MODULES WITH 8-DROP PORTS</b>		
21	22 dB	99.5/0.5 TAP WITH 1X8 SPLITTER DROP PORTS
22	21 dB	99/1 TAP WITH 1X8 SPLITTER DROP PORTS
23	19 dB	98/2 TAP WITH 1X8 SPLITTER DROP PORTS
24	17 dB	97/3 TAP WITH 1X8 SPLITTER DROP PORTS
25	15 dB	95/5 TAP WITH 1X8 SPLITTER DROP PORTS
26	14 dB	94/6 TAP WITH 1X8 SPLITTER DROP PORTS
27	12 dB	90/10 TAP WITH 1X8 SPLITTER DROP PORTS
28	11 dB	1X8 SPLITTER DROP PORTS – TERMINATOR TAP



# PEACOC® Multiport Mid-Span Terminal

## Optical Specifications:

PARAMETER	UNIT	SPECIFICATIONS	
Operating Wavelength Range	nm	1310±40 and 1550±40	
Return Loss	dB	≥ 50	
Directivity	dB	≥ 55	
PDL	dB	≤ 0.20	
Insertion Loss for 2-Port TAPs		Signal Port (THRU)	Drop Ports
21dB	dB	≤0.4	19.5~21.5
19dB	dB	≤0.5	16.5~18.5
17dB	dB	≤0.7	16.0~18.0
15dB	dB	≤0.8	14.2~15.8
14dB	dB	≤1.1	12.0~14.0
12dB	dB	≤1.3	10.5~12.5
10dB	dB	≤2.1	8.5~10.5
8dB	dB	≤2.7	7.5~9.5
7dB	dB	≤4.1	6.2~7.8
5dB	dB	≤6.0	4.2~5.8
4dB	dB	-	≤4.0
Insertion Loss for 4-Port TAPs		Signal Port (THRU)	Drop Ports
21dB	dB	≤0.6	18.5~20.5
19dB	dB	≤0.8	16.5~18.5
17dB	dB	≤1.0	15.5~17.5
15dB	dB	≤1.3	14.2~15.8
13dB	dB	≤2.0	12.2~13.8
11dB	dB	≤2.7	10.2~11.8
10dB	dB	≤4.0	9.0~11.5
9dB	dB	≤6.0	8.0~9.8
7dB	dB	-	6.2~7.8
Insertion Loss for 8-Port TAPs		Signal Port (THRU)	Drop Ports
22dB	dB	≤0.8	20.0~22.0
21dB	dB	≤1.0	18.5~21.5
19dB	dB	≤1.3	16.5~18.5
17dB	dB	≤2.0	15.0~16.8
15dB	dB	≤2.7	14.2~15.8
14dB	dB	≤4.1	12.8~14.4
12dB	dB	≤6.0	11.0~12.8
11dB	dB	-	9.5~10.7

Note: Insertion loss includes WDL, TDL and PDL but excludes connector losses (≤1.0 dB)

